

# Test Report

**Report No.** SCL03I000610016

Page 1 of 7

**Applicant** ZHONGSHAN FUZHOU ADHESIVE-PRODUCT CO.,LTD

**Address** TORCH HIGH-TECH DEVELOPMENT ZONE,ZHONGSHAN CITY,GUANGDONGPROVINCE CHINA

**The following sample(s) and sample information was/were submitted and identified by/on the behalf of the client**

**Sample Name** 镭射膜/Laser film  
**Client Reference Information** HP-01/HP-07/HP-12/HP-12-G/HP-13/HP-17/HP-17-G/HP-17-R/HP-17-GR/HP-17-B/HP-17-Z/HP-18/HP-21/HP-23/HP-24/HP-29/HP-29-G/HP-59/HP-65/HP-66/HP-69/HP-78

**Sample Received Date** Jan. 30, 2016  
**Testing Period** Jan. 30, 2016 to Feb. 4, 2016

**Test Requested** As specified by client, to test Lead (Pb), Cadmium (Cd), Mercury (Hg) Hexavalent Chromium(Cr(VI)), Polybrominated Biphenyl(PBBs), Polybrominated Diphenyl Ethers(PBDEs), Phthalates(DBP, BBP, DEHP, DIBP) in the submitted sample(s).

**Test Method** Please refer to the following page(s).

**Test Result(s)** Please refer to the following page(s).

\*\*\*\*\*

**Conclusion**

Tested Sample	According to directive	Result
Submitted Sample	RoHS Directive 2011/65/EU with amendment (EU) 2015/863	Pass

\*\*\*\*\*

Pass means that the results shown on the report do not exceed the limits set by RoHS Directive 2011/65/EU with amendment (EU) 2015/863.



*Tao Chen*

*Qinghong Wan*

Qinghong Wan  
Technical Manager

Reviewed by *Wenjun Wang*

Date Feb. 6, 2016

No. R131022380

Centre Testing International Group Co.,Ltd. Shunde Branch  
 9/F., Yongying Building, Section 2, No.8, East of Rongqi Avenue, Ronggui, Shunde District, Foshan, Guangdong, China

# Test Report

Report No. SCL03I000610016

Page 2 of 7

## Test Method

Test Item(s)	Test Method	Measured Equipment(s)
Lead (Pb)	IEC 62321-5:2013 Ed.1.0	ICP-OES
Cadmium (Cd)	IEC 62321-5:2013 Ed.1.0	ICP-OES
Mercury (Hg)	IEC 62321-4:2013 Ed.1.0	ICP-OES
Hexavalent Chromium(Cr(VI))	IEC 62321:2008 Ed.1 Annex C	UV-Vis
Polybrominated Biphenyl(PBBs)	IEC 62321-6:2015	GC-MS
Polybrominated Diphenyl Ethers(PBDEs)	IEC 62321-6:2015	GC-MS
Phthalates(DBP, BBP, DEHP, DIBP)	Refer to EN 14372:2004(E)	GC-MS

# Test Report

Report No. SCL03I000610016

Page 3 of 7

**Test Result(s)**

Tested Item(s)	Result	MDL	Limit
Lead (Pb)	N.D.	2 mg/kg	1000 mg/kg
Cadmium (Cd)	N.D.	2 mg/kg	100 mg/kg
Mercury (Hg)	N.D.	2 mg/kg	1000 mg/kg
Hexavalent Chromium (Cr(VI))	N.D.	2 mg/kg	1000 mg/kg

Tested Item(s)	Result	MDL	Limit
<b>Polybrominated Biphenyl(PBBs)</b>			
Monobromobiphenyl	N.D.	5 mg/kg	1000 mg/kg
Dibromobiphenyl	N.D.	5 mg/kg	
Tribromobiphenyl	N.D.	5 mg/kg	
Tetrabromobiphenyl	N.D.	5 mg/kg	
Pentabromobiphenyl	N.D.	5 mg/kg	
Hexabromobiphenyl	N.D.	5 mg/kg	
Heptabromobiphenyl	N.D.	5 mg/kg	
Octabromobiphenyl	N.D.	5 mg/kg	
Nonabromobiphenyl	N.D.	5 mg/kg	
Decabromobiphenyl	N.D.	5 mg/kg	

Tested Item(s)	Result	MDL	Limit
<b>Polybrominated Diphenyl Ethers(PBDEs)</b>			
Monobromodiphenyl ether	N.D.	5 mg/kg	1000 mg/kg
Dibromodiphenyl ether	N.D.	5 mg/kg	
Tribromodiphenyl ether	N.D.	5 mg/kg	
Tetrabromodiphenyl ether	N.D.	5 mg/kg	
Pentabromodiphenyl ether	N.D.	5 mg/kg	
Hexabromodiphenyl ether	N.D.	5 mg/kg	
Heptabromodiphenyl ether	N.D.	5 mg/kg	
Octabromodiphenyl ether	N.D.	5 mg/kg	
Nonabromodiphenyl ether	N.D.	5 mg/kg	
Decabromodiphenyl ether	N.D.	5 mg/kg	

# Test Report

Report No. SCL03I000610016

Page 4 of 7

Tested Item(s)	Result	MDL	Limit
<b>Phthalates</b>			
Dibutyl phthalate(DBP) CAS#:84-74-2	N.D.	50 mg/kg	1000 mg/kg
Butylbenzyl phthalate(BBP) CAS#:85-68-7	N.D.	50 mg/kg	1000 mg/kg
Di-2-ethylhexyl phthalate(DEHP) CAS#:117-81-7	N.D.	50 mg/kg	1000 mg/kg
Diisobutyl phthalate(DIBP) CAS#:84-69-5	N.D.	50 mg/kg	1000 mg/kg

**Tested Sample/Part Description** Coloured plastic film

**Remark:** The sample(s) had been dissolved totally tested for Lead, Cadmium, Mercury.

- MDL = Method Detection Limit
- N.D. = Not Detected (<MDL )
- mg/kg = ppm = parts per million

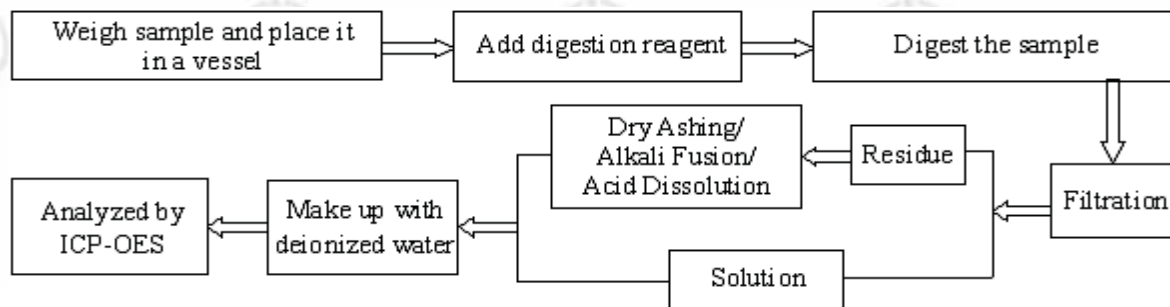
# Test Report

Report No. SCL03I000610016

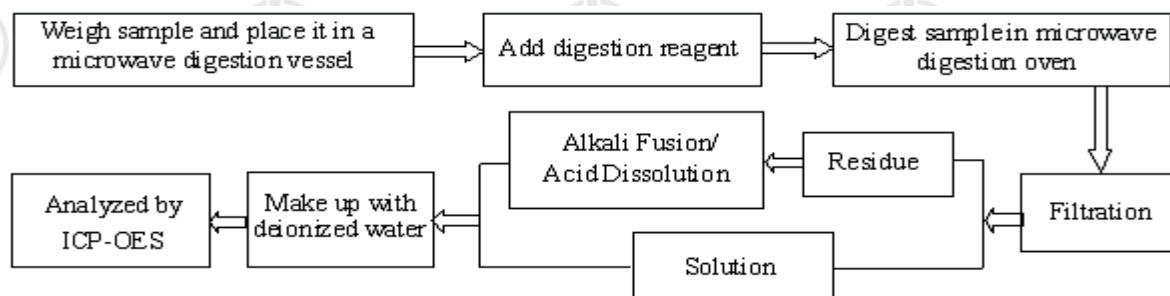
Page 5 of 7

## Test Process

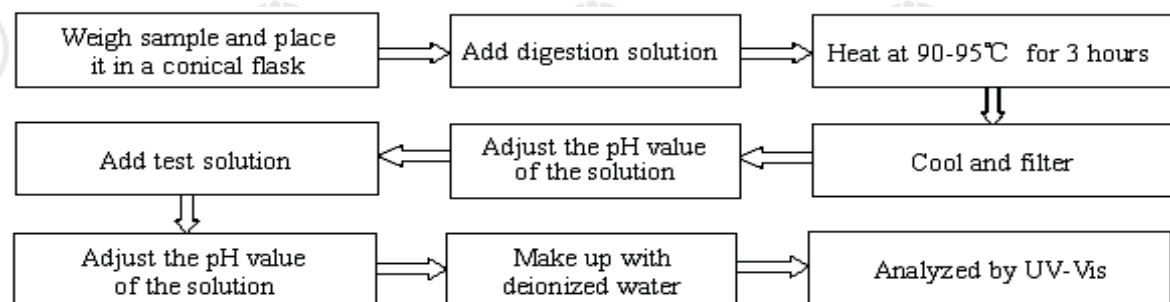
### 1. Lead (Pb), Cadmium (Cd)



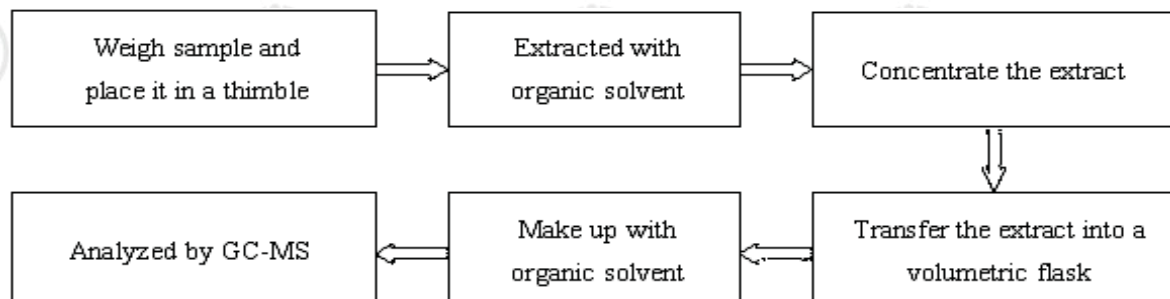
### 2. Mercury (Hg)



### 3. Hexavalent Chromium(Cr(VI))



### 4. Polybrominated Biphenyl(PBBs) , Polybrominated Diphenyl Ethers(PBDEs)

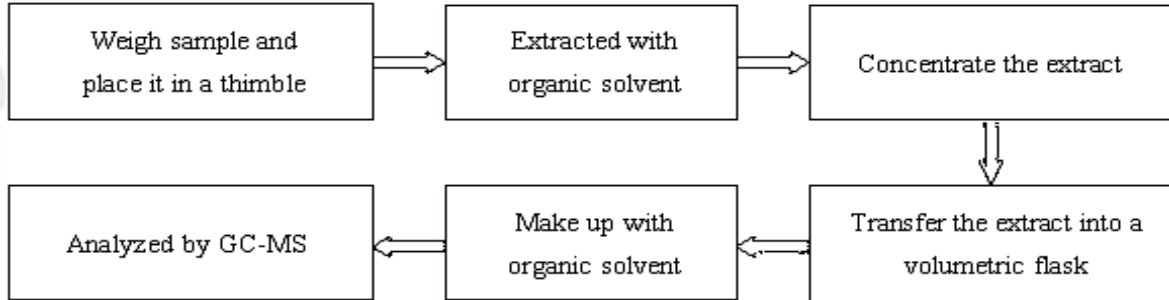


# Test Report

Report No. SCL03I000610016

Page 6 of 7

## 5. Phthalates(DBP, BBP, DEHP, DIBP)

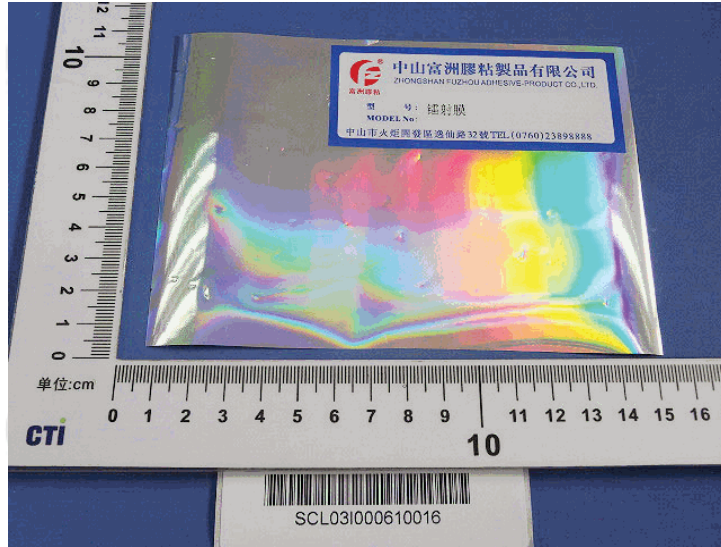


# Test Report

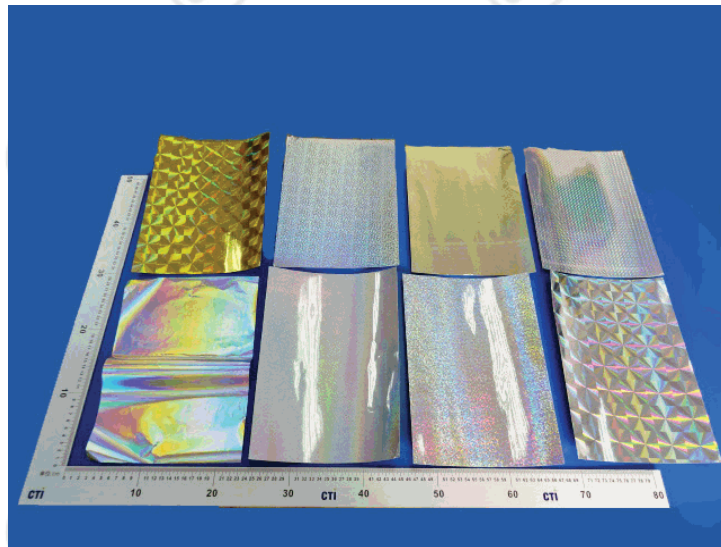
Report No. SCL03I000610016

Page 7 of 7

## Photo(s) of the sample(s)



## Photo(s) for reference



At the request of client, the product(s) in this report is/are provided by applicant (non-tested sample(s)).

\*\*\* End of report \*\*\*

The test report is effective only with both signature and specialized stamp. The result(s) shown in this report refer only to the sample(s) tested. Without written approval of CTI, this report can't be reproduced except in full.